



# GAT MONTHLY MEMBERSHIP PROGRESS REPORT

Results as of: 3/31/2022

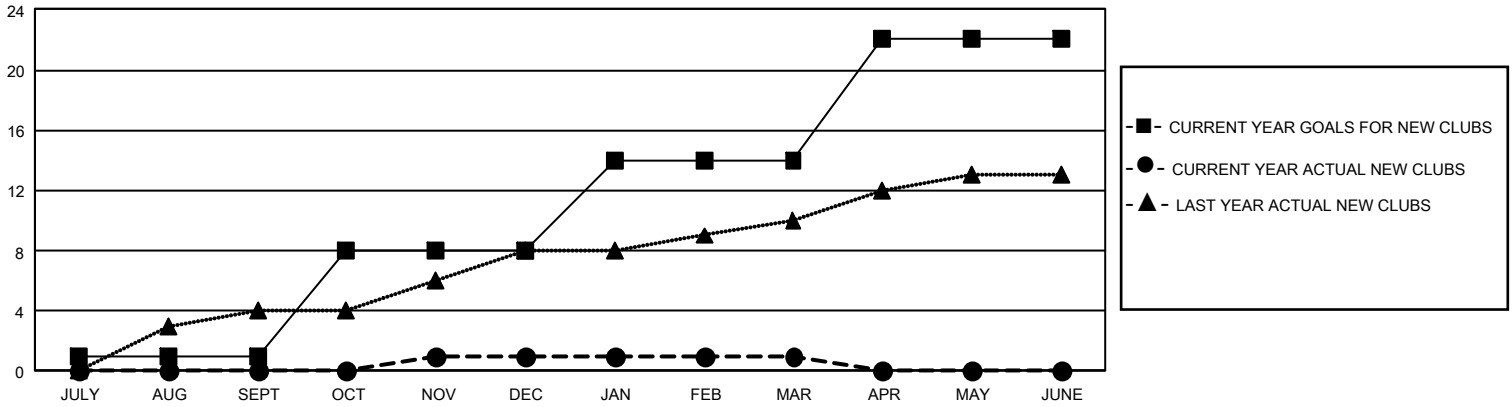
## GMT Constitutional Area 1, Group C

REPORT DOES NOT INCLUDE CLUBS IN UNDISTRICTED AREAS.

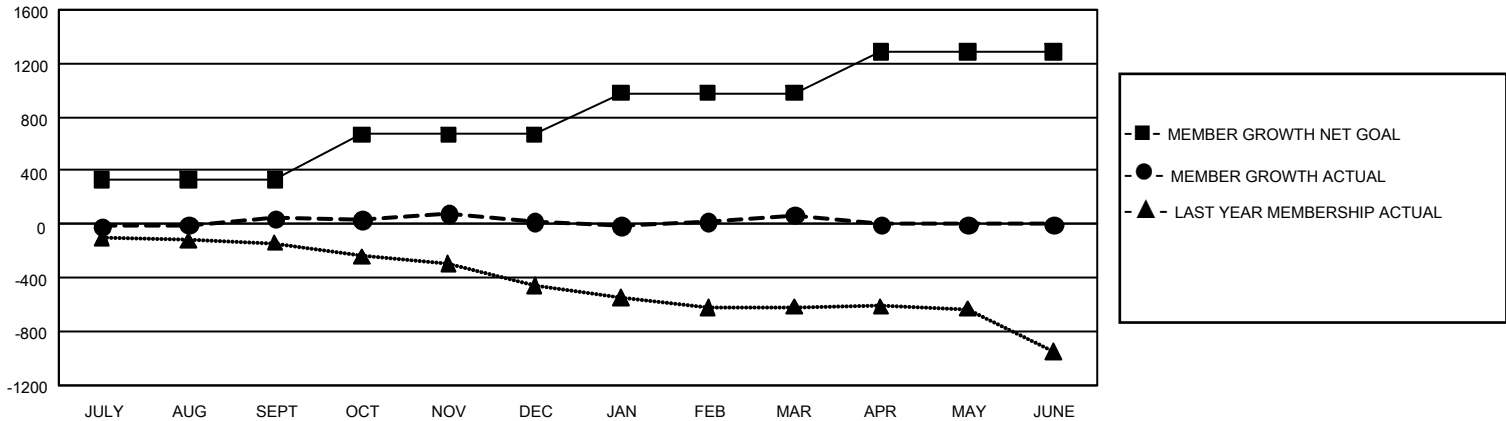
Clubs			
RESULTS FOR 2021-2022			
QUARTER	NEW CLUB GOAL	NEW CLUBS	DROPPED CLUBS
JULY/AUG/SEPT	3	0	4
OCT/NOV/DEC	21	1	4
JAN/FEB/MAR	18	0	1
APR/MAY/JUNE	24	0	0

Members			
RESULTS FOR 2021-2022			
QUARTER	MEMBER GROWTH NET GOAL	MEMBER GROWTH ACTUAL	DROPPED MEMBERS ACTUAL (including transfers)
JULY/AUG/SEPT	330	481	393
OCT/NOV/DEC	338	509	493
JAN/FEB/MAR	313	491	414
APR/MAY/JUNE	308	0	0

GOALS AND ACTUAL NEW CLUBS CUMULATIVE



GOALS AND ACTUAL MEMBERS CUMULATIVE



<b>DROPPED CLUBS: 9</b>	386 CLUBS OF 640 ADDED 1 OR MORE NEW MEMBERS	<u>GENDER DISTRIBUTION</u>	
<u>DROPPED MEMBERS</u>		MALE	13,421 (68.48%)
DECEASED	219	FEMALE	6,173 (31.50%)
CLUB CANCELLED	26	NON BINARY	0 (0.00%)
OTHER	1,056	PREFER NOT TO ANSWER	5 (0.03%)
<b>TOTAL</b>	<b>1,301</b>	TOTAL FAMILY UNIT MEMBERS	3,920
	<a href="#">CLICK HERE FOR CUMULATIVE MEMBERSHIP DATA</a>	FAMILY MEMBERS PAYING HALF DUES	1,988